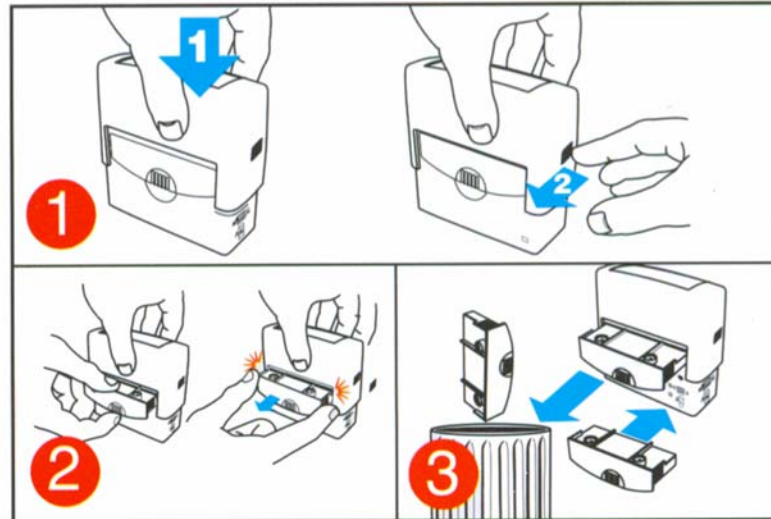
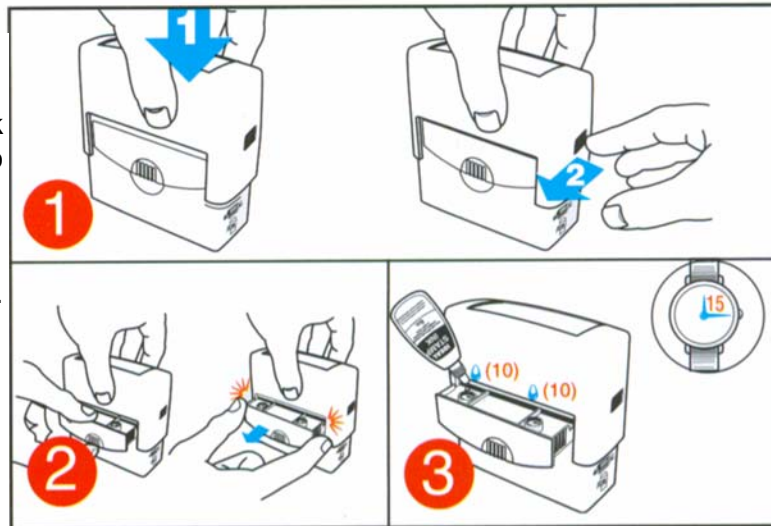


## IDEAL<sup>®</sup> Re-Inking Instructions

Accurate re-inking is a snap with the IDEAL re-inking system. Either re-ink the pad or replace the pad, the choice is yours.

### To Re-Ink

1. Push down to the lock line and slide lock into position.
2. Pull out ink pad cartridge until it clicks.
3. Fill the ink port(s) with 10 drops of ink, then close and wait 15 minutes.



### To Replace

Same procedure as above, except you replace the entire ink pad cartridge.



Always use premium quality IDEAL<sup>®</sup> stamp ink. This ink is formulated for clean, fast drying impressions without bleeding or fading on most paper stock. Both inks and replacement ink pad cartridges are available in a variety of colors and sizes.

